

Fat and Oil Data for Fourth Quarter 1929

Production, Consumption, Exports and Imports with Factory and Warehouse Stocks December 31, 1929

WASHINGTON, D. C., February 1, 1930.—The Department of Commerce announces that the factory production of fats and oils (exclusive of refined oil and derivatives) during the three-month period ended December 31, 1929, was as follows: vegetable oils, 1,043,869,998 pounds; fish oils, 33,546,738 pounds; animal fats, 595,875,825 pounds; and greases, 102,880,547 pounds; a total of 1,776,173,108 pounds. Of the several kinds of fats and oils covered by this inquiry, the greatest production, 713,676,902 pounds appears for cottonseed oil. Next in order is lard with 473,140,899 pounds; linseed oil with 182,227,710 pounds; tallow with 121,171,404 pounds; coconut oil with 78,289,535 pounds, and corn oil with 28,247,174 pounds.

The production of refined oils during the period was as follows: Cottonseed, 611,915,608 pounds; coconut, 78,289,535 pounds; peanut, 3,188,639 pounds; corn, 28,247,174 pounds; soya-bean, 1,735,802 pounds; and palm-kernel, 3,257,256 pounds. The quantity of crude oil used in the production of each of these refined oils is included in the figures of crude consumed.

The data for the factory production, factory consumption, imports, exports and factory and warehouse stocks of fats and oils and for the raw materials used in the production of vegetable oils for the three-month period appear in the following statements:

PRODUCTION, CONSUMPTION, AND STOCKS OF FATS AND OILS

(In some cases, where products were made by a continuous process, the intermediate products were not reported.)

KIND	Factory operations for the		Factory and Warehouse stocks Dec. 31, 1929 (pounds)
	quarter ended Production (pounds)	December 31, 1929 Consumption (pounds)	
VEGETABLE OILS: ¹			
Cottonseed, crude	713,676,902	663,519,195	116,150,428
Cottonseed, refined	611,915,608	322,365,495	422,335,138
Peanut, virgin and crude	6,719,545	4,208,520	2,268,982
Peanut, refined	3,188,639	2,343,939	2,286,223
Coconut, or copra, crude	83,474,078	163,125,044	174,708,817
Coconut, or copra, refined	78,289,535	94,176,042	17,712,357
Corn, crude	32,618,347	36,873,737	11,556,733
Corn, refined	28,247,174	6,811,633	12,325,083
Soya-bean, crude	5,230,680	4,821,375	12,574,161
Soya-bean, refined	1,735,802	1,369,901	2,870,772
Olive, edible	417,337	546,452	6,113,680
Olive, inedible	16,000	1,454,405	1,461,333
Sulphur oil, or olive foots	—	8,588,408	8,471,173
Palm-kernel, crude	—	12,400,251	13,572,455
Palm-kernel, refined	3,257,256	3,805,596	1,195,913
Rapeseed	—	3,245,683	5,783,419
Linseed	182,227,710	106,054,528	140,860,386
Chinese wood or tung	—	22,700,121	29,398,429
Chinese vegetable tallow	—	893,921	2,422,514
Castor	17,021,789	5,358,554	14,347,277
Palm	—	52,863,715	52,579,213
All other	1,467,610	5,549,748	20,237,965
FISH OILS: ¹			
Cod and cod-liver	469,717	4,455,124	8,051,517
Menhaden	8,445,896	8,220,255	9,600,219
Whale	1,366,500	18,920,445	33,059,711
Herring, including sardine	22,374,510	12,915,881	52,095,905
Sperm	—	268,379	3,564,363
All other, (including marine animal)	890,115	1,955,013	11,267,376
ANIMAL FATS:			
Lard, neutral	10,992,150	8,740,227	4,174,186
Lard, other edible	462,148,749	4,910,392	69,901,746
Tallow, edible	11,342,348	6,621,170	3,161,199
Tallow, inedible	109,829,056	119,762,919	99,591,568
Neat's-foot oil	1,563,522	1,551,775	1,912,380

¹ The data of oils produced, consumed, and on hand by fish oil producers and fish cannery were collected by the Bureau of Fisheries.

PRODUCTION, CONSUMPTION, AND STOCKS OF FATS AND OILS (Continued)

KIND	Factory operations for the		Factory and
	Production	Consumption	Ware'se stocks
GREASES:	(pounds)	(pounds)	Dec. 31, 1929
White	18,668,094	14,212,746	11,362,547
Yellow	21,567,214	12,896,590	12,183,156
Brown	12,163,725	12,641,397	13,756,999
Bone	6,324,770	262,634	1,994,576
Tankage	13,957,694	86,659	4,064,358
Garbage or house	22,623,510	17,089,707	15,528,768
Wool	2,726,518	1,536,232	4,291,000
Recovered	699,414	501,568	794,476
All other	4,149,608	1,072,613	2,541,983
OTHER PRODUCTS:			
Lard compounds and other lard substitutes	316,809,537	93,011	31,670,056
Hydrogenated oils	171,997,481	152,993,560	15,976,381
Stearin, vegetable	5,764,265	4,874,214	3,260,118
Stearin, animal, edible	17,296,642	15,416,223	4,955,319
Stearin, animal, inedible	4,517,975	6,820,505	3,446,588
Oleo oil	31,480,197	17,162,761	8,107,873
Lard oil	6,390,037	4,094,993	5,091,194
Tallow oil	2,646,639	2,546,920	1,865,459
Fatty acids	36,782,215	32,474,776	8,422,135
Fatty acids, distilled	9,558,343	6,055,310	2,256,729
Red oil	11,656,614	6,598,743	6,689,304
Stearic acid	9,031,568	2,400,495	5,694,480
Glycerin, crude 80% basis	35,697,468	42,803,769	14,170,434
Glycerin, dynamite	16,587,349	8,580,205	9,619,576
Glycerin, chemically pure	17,935,915	2,205,014	6,191,411
Cottonseed foots, 50% basis	80,443,114	61,004,019	35,106,790
Cottonseed foots, distilled	22,254,992	20,292,779	6,396,508
Other vegetable oil foots	11,769,262	12,542,038	3,134,772
Other vegetable oil foots, distilled	756,766	1,886,477	1,465,351
Acidulated soap stock	22,803,808	10,981,760	19,741,842
Miscellaneous soap stock	266,254	466,911	417,501

RAW MATERIALS USED IN THE MANUFACTURE OF VEGETABLE OILS

KIND	Tons of 2000 pounds		KIND	Tons of 2000 pounds	
	Consumed	On hand		Consumed	On hand
	Oct. 1 to	Dec. 31		Oct. 1 to	Dec. 31
Cottonseed	1,150	553	Flaxseed	278,525	121,782
Peanuts, hulled	7,796	1,589	Castor beans	18,873	12,096
Peanuts, in the hull	4,105	1,091	Mustard seed	230	2,428
Copra	67,239	23,097	Soya-beans	19,829	14,403
Coconuts and skins	352	726	Olives	1,575	9
Corn germs	54,843	173	Other kinds	2,943	518

IMPORTS OF OIL SEEDS, QUARTER ENDED DEC. 31, 1929

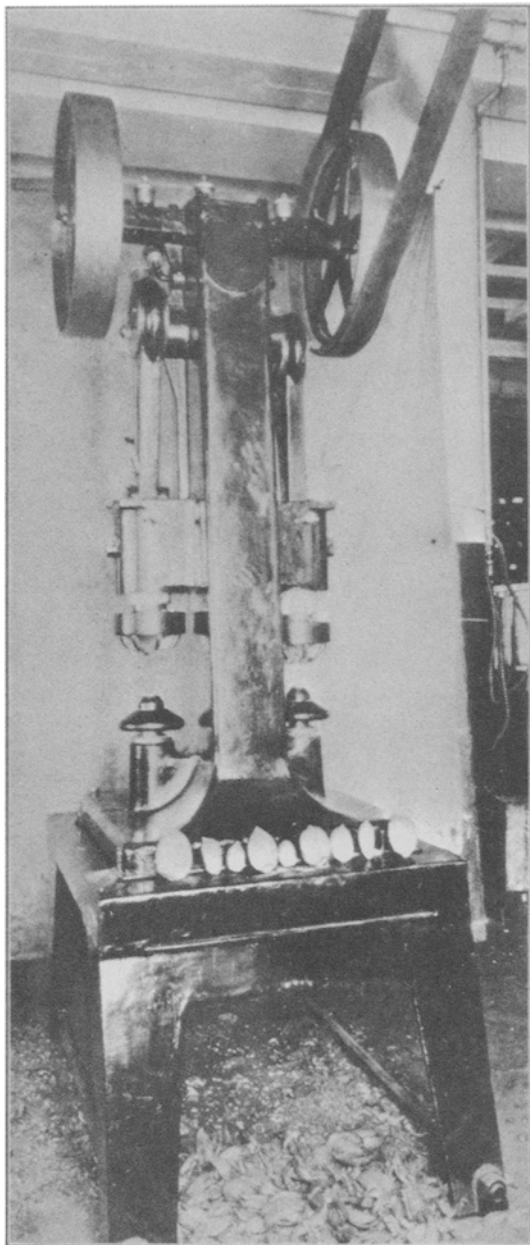
KIND	Tons	KIND	Tons
Cottonseed	81	Poppy seed	531
Castor beans	23,716	Perilla and sesame seed	398
Copra	51,953	Other oil seeds	3,593
Flaxseed	155,616		

IMPORTS OF FOREIGN FATS AND OILS, QUARTER ENDED DEC. 31, 1929

KIND	Pounds	KIND	Pounds
Animal oils & fats, edible	447,430	Palm-kernel oil	13,896,492
Whale oil	2,876,625	Sesame oil	3,137,083
Cod oil	5,148,705	Vegetable tallow	
Cod-liver oil	5,934,908	Vegetable wax	1,003,365
Other fish oils	20,311,350	Carnauba wax	989,640
Tallow	455,916	Peanut oil	483,549
Wool grease	2,075,633	Rape (colza) oil	4,901,895
Grease and oils, n.e.s. (value)	\$292,425	Linseed oil	3,290,639
Olive oil, edible	21,597,588	Soya-bean oil	4,560,793
Tung oils	25,745,602	Perilla oil	30,000
Coconut oil	101,272,288	Other expressed oils	21,256,885
Sulphur oil or olive foots	8,313,957	Glycerin, crude	1,637,108
Other olive oil, inedible	2,064,671	Glycerin, refined	605,876
Palm oil	50,169,618		

Brazilian Babassu

(From Page 93)



Machine for cracking babassu nuts

Various Uses of the Palm

THE uses of the babassu palm are numerous. The green leaves serve as roofing and thatching material, and for the manufacture of hats, baskets, sails and sail bases. The stems of the fronds are used in making special baskets and shades.

The sap is used as a feedstuff and foodstuff, both raw and cooked, and is a satisfactory raw material for the manufacture of sugar. The fibrous covering of the nut is useful for the manufacture of cord, brushes and mats. The mealy substance between the shell and the kernels is used as a food by the natives and also as a cattle feed. It contains some considerable quantity of tannin and starch. The shell, which is very hard, is said to be used in the manufacture of buttons and other articles of domestic use, and would undoubtedly be of value for the preparation of active carbons for various purposes.

The state of Maranhao has sent to New York a film depicting the babassu industry, showing the forests, transportation methods, primitive methods of gathering and kernel extraction, as well as machine extraction by means of the machine described above.

Shortening and Oil Prices

Prices of shortening and salad and cooking oils on Thursday, Feb. 20, 1930, based on sales made by member companies of the Shortening and Oil Division of the National Cottonseed Products Association, were as follows:

SHORTENING

	Per lb.
North and Northeast:	
Carlots, 26,000 lbs.	@10¾
3,500 lbs. and up	@11
Less than 3,500 lbs.	@11½
Southeast:	
3,500 lbs.	@10½
Less than 35,000 lbs.	@11
Southwest:	
Carlots, 26,000 lbs.	@10½
10,000 lbs. and up	@10¾
Less than 10,000 lbs.	@11⅞
Pacific Coast:	@11¾

SALAD OIL

North and Northeast:	
Carlots, 26,000 lbs.	@10½
5 bbls. and up	@11
1 to 4 bbls.	@11½
South:	
Carlots, 26,000 lbs.	@10¾
Less than carlots	@10¾
Pacific Coast:	@10¾

COOKING OIL—WHITE

¼c per lb. less than salad oil.

COOKING OIL—YELLOW

¼c per lb. than salad oil.

The Sanitary Utility Company, manufacturers of grease recovery apparatus, formerly of 400 West Madison Street, Chicago, are now located in new quarters in the McCormick Building, 332 South Michigan Avenue.